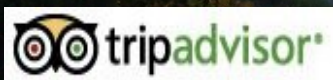


Useful Links and Sights

www.welterbe-mittelrheintal.de
www.rhein-nahe-touristik.de
www.bacharach.de
www.rheinburgenweg.com
www.burg-rheinstein.de
www.guenderodefilmhaus.de
www.st-goar.de/17-0-burg-rheinfels.html
www.burg-pfalzgrafenstein.de
www.st-goar.de
www.ruedesheim.de
oberwesel.welterbe-mittelrhein.de
www.hochwildschutzpark.de
www.rheinwelle-wasserwelt.de



Reservations can also be made on:



How to get here

Car via motorway A61 and federal road B9
Train via Bingen or Koblenz to Bacharach
Plane Hahn Airport or Frankfurt international Airport

Distances

Frankfurt Airport	75 km - 45 miles
Mainz	50 km - 30 miles
Koblenz	50 km - 30 miles
Hahn Airport	50 km - 30 miles
Berlin	620 km - 385 miles
Munich	440 km - 270 miles
Hamburg	560 km - 350 miles
Cologne	150 km - 95 miles
Dresden	535 km - 330 miles

Schau-Rhein

Holiday Apartments with the View



Holiday Apartments, 85 m², and 55m²
with 1 or 2 bedrooms, Living Room,
Kitchen, Bath, Balcony or Terrace
Suiteable for up to 6 or 3 person
high above the Rhine
with a fantastic view over the
Rhine Valley and the Taunus Mountains

Schau-Rhein

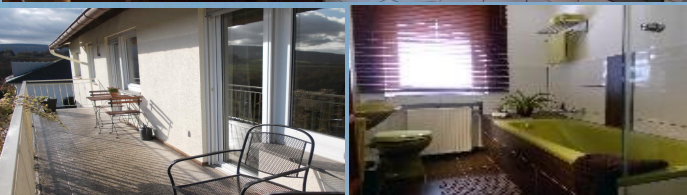
Familie Miehe

55422 Bacharach Medenscheid
Fürstenbergstr.10
Germany

Telefon +49 152 53420761
eMail info@schau-rhein.de
holiday-rentals-bacharach.com

Apartment 1

The Apartment 85m² / 900 sq ft is equipped with high standard modern furniture. There is a full equipped modern kitchen with dishwasher and dining table. A windowed bathroom with shower and tub. From the attached balcony you have a unique, fantastic view overlooking the Rhine Valley and the Taunus Mountains.



The bedrooms have one kingsize bed (180 x 200), respectively 2 single beds (90 x 200). A crib can be provided.

Rates starting from 75 Euro per night

Please contact us for an individual offer
More details are available on our website.

Location

Medenscheid a suburb of Bacharach is a picturesque village high above the Rhine valley. With Flowers, a well, stud work houses and a small chappel. The Rheinburgen hiking trail is leading straight through the village and allows some of the most spectacular views on the romantic Rhine Valley.



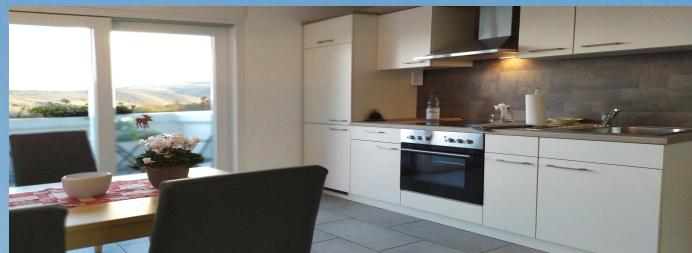
Enjoy the peace and silence of this place and the breathtaking view over the Rhine Valley with the majestic river and the Taunus Mountains. The area invites for an extended walk or even a hike. The famous Rheinburgen hiking track is just passing by the house. The tiny ancient villages left and right side of the Rhine awaiting to be discovered by you. Bacharach, St.Goar with the imposing legendary Loreley-Rock, Lorch Oberwesel, Ruedesheim and Assmannshausen are just a few kilometers away. Winyards all over. Taste the well known Rhine Wine in one of the cosy winebars or directly at one of the many producers wine taverns.



The 'Rheinburgen' hiking track is just passing by the house

Apartment 2

This 55m² (600sqft) apartment has a spacious living room, bedroom with a kingsize double bed, Kitchen with a dining table and a windowed bathroom with a walk-in shower. This apartment provides additional sleeping option in the living room It is suitable for 2(+1).



From the eastwards terrace you have a fantastic view over the Rhine Valley and the Taunus and Soonwald Mountains and the on the westards terrace you can enjoy the afternoon sun.

Rates starting from 60 Euro per night

Please contact us for an individual offer
More details are available on our website.